

# NIMH Update

Jovier D. Evans, PhD & Laura M. Rowland, PhD  
NIMH, Division of Translational Research  
Geriatrics and Aging Processes Research Branch

Advanced Research Institute Webinar  
March 15, 2022



National Institute  
of Mental Health

# AGENDA

---

- NIMH Budget for Fiscal 2022
- NIMH Strategic Plan
- Institute Priorities and Initiatives
- Geriatrics & Aging Processes Branch
- Future Directions for the Branch
- Open Discussion

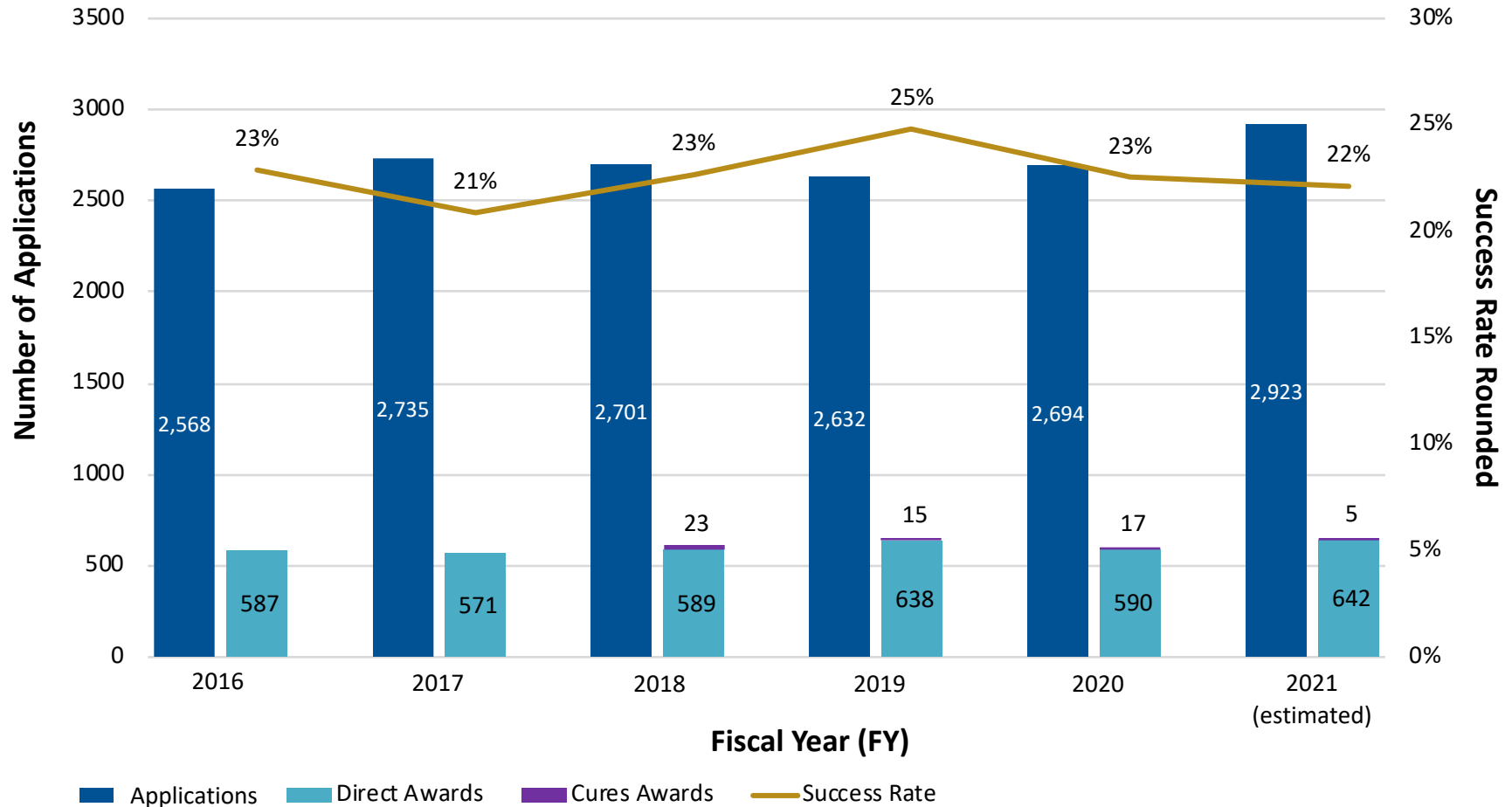
# AGENDA

---

- NIMH Budget for Fiscal 2022
- NIMH Strategic Plan
- Institute Priorities and Initiatives
- Geriatrics & Aging Processes Branch
- Future Directions for the Branch
- Open Discussion

# NIMH Budget Update

## NIMH Applications, Awards, and Success Rates for Research Project Grants





# Appropriations Update

---

- On December 3, 2021, President Biden signed the Further Extending Government Funding Act (H.R. 6119), a stopgap spending measure that extended FY2021 spending levels through March 11, 2022
- On October 18, the Senate Appropriations Committee released the text of the FY2022 Labor, Health and Human Services, Education, and Related Agencies bill and Explanatory Statement. The bill includes:
  - \$47.922 billion for NIH, a 12 percent increase over FY2021 appropriations
  - \$2.219 billion for NIMH, a 5.5 percent increase over FY2021 appropriations
    - Also proposes \$25 million to expand research on the impact of the COVID–19 pandemic on mental health

# NIMH FY22 INTERIM FUNDING STRATEGY

<https://www.nimh.nih.gov/funding/grant-writing-and-application-process/fy-2022-funding-strategy-for-research-grants>

- Fund roughly 3/4 of new/competing applications under the 20<sup>th</sup> percentile (under 25th percentile for ESIs/EEIs)
  - No specific payline; support most applications below 10<sup>th</sup> percentile, many in 10-20<sup>th</sup> percentile range, some beyond 20<sup>th</sup> percentile
- Support the Next Generation Initiative, prioritizing support for Early Stage Investigators (ESI)
- Decisions based on:
  - Alignment with NIMH Strategic Plan (Institute priorities)
  - Programmatic portfolio considerations
  - ESI investigator status
  - Availability of funds
- This funding strategy will be updated when FY 2022 appropriations are enacted, and final funding policies are determined.

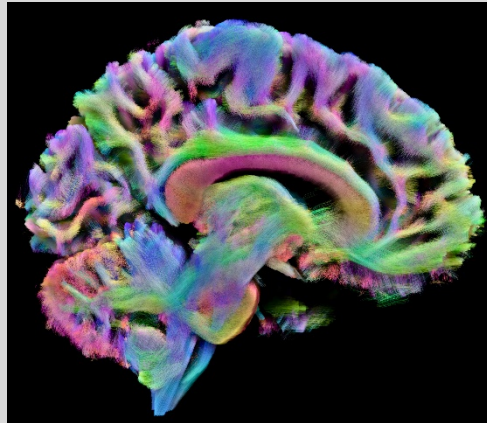
# AGENDA

---

- NIMH Budget for Fiscal 2022
- **NIMH Strategic Plan Updates**
- Priorities and Initiatives
- Geriatrics & Aging Processes Branch
- Future Directions for the Branch
- Open Discussion

# 2020 NIMH Strategic Plan for Research: Updates

**Goal 1:**  
Define the Brain  
Mechanisms  
Underlying  
Complex Behaviors



**Goal 2:**  
Examine Mental  
Illness Trajectories  
Across the Lifespan



**Goal 3:**  
Strive for  
Prevention and  
Cures



**Goal 4:**  
Strengthen the  
Public Health  
Impact of NIMH-  
Supported  
Research



# AGENDA

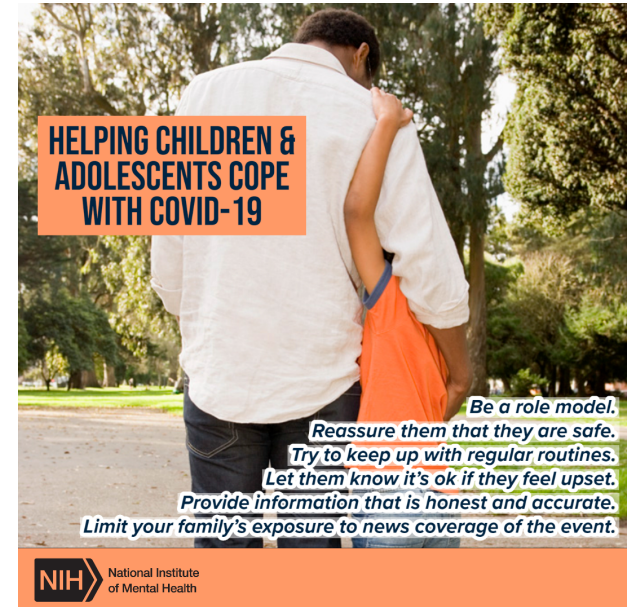
---

- NIMH Budget for Fiscal 2022
- NIMH Strategic Plan Updates
- **Priorities and Initiatives**
- Geriatrics & Aging Processes Branch
- Future Directions for the Branch
- Open Discussion

# NIMH's Response to COVID-19



Supporting Kids' Mental Health During COVID-19  
September 16, 2021

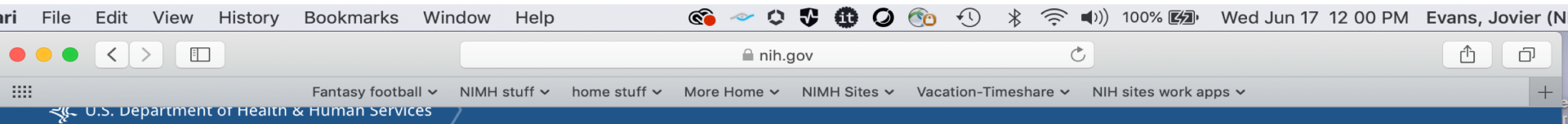


NIMH recently released two Notices:

- **Notice of Special Interest: COVID-19 Pandemic Mental Health Research (NOT-MH-22-100)**
- **Urgent Award: COVID-19 Mental Health Research (PAR-22-112, PAR-22-113)**



# COVID-19 NIH Resources



Search NIH



[NIH Employee Intranet](#) | [Staff Directory](#) | [En Español](#)

Health Information

Grants & Funding

News & Events

Research & Training

Institutes at NIH

About NIH

**! COVID-19 is an emerging, rapidly evolving situation.**

Get the latest public health information from CDC: <https://www.coronavirus.gov>

Get the latest research information from NIH: <https://www.nih.gov/coronavirus>

## Coronavirus (COVID-19)



This page last reviewed on June 12, 2020

Sign up to get COVID-19 updates from NIH

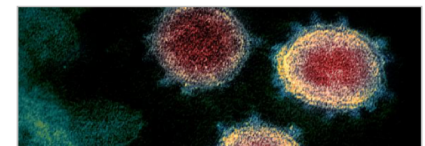
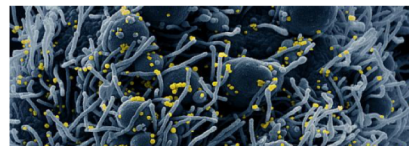
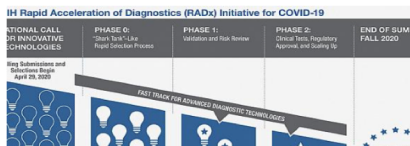


Subscribe Now

Search clinical trials related to COVID-19



See All Clinical Trials



# NIMH Suicide Research

---

Progress since 2010: More evidence-based practices

- Valid risk identification approaches in healthcare settings
  - Risk Identification: Screening; Risk Algorithms
- Intervention & implementation examples
  - Safety planning
  - Pragmatic trials in healthcare systems
  - Collaborative care to address opioid comorbidity

Improved US estimates of suicide decedents & their characteristics

- Healthcare access and mental health diagnoses

How can we better implement what we know to reduce the suicide rate?

- Telehealth enabled suicide prevention
- Rapid-acting interventions



# NIMH Suicide Prevention Opportunities

---

- Service-Ready Tools for Identification, Prevention, and Treatment of Individuals at Risk for Suicide (R01 Clinical Trial Optional) [RFA-MH-21-110](#)
- Service-Ready Tools for Identification, Prevention, and Treatment of Individuals at Risk for Suicide (R34 Clinical Trial Optional) [RFA-MH-21-111](#)
- Service-Ready Tools for Identification, Prevention, and Treatment of Individuals at Risk for Suicide (R43/R44 Clinical Trial Optional) [RFA-MH-21-112](#)
- Pilot Practice-based Research for Primary Care Suicide Prevention (R34 Clinical Trial Optional) [RFA-MH-22-120](#)

# Social disconnection and Suicide Risk in Late Life

---

- RFA-MH-22-135 (R01) and RFA-MH-22-136 (R21)
- Aim: encourage research that addresses the link between social disconnection in late-life and late-life suicidal thoughts and behaviors.
- Of specific interest is research that identifies mechanisms by which social disconnection confers risk for, and social integration protects against, suicidal thoughts and behaviors in late life.
- Mechanisms to be considered exist at multiple levels of analysis, including but not limited to neurobiological, behavioral, and environmental.
- NIA and NIMH sponsored FOA
- Next Receipt Date: **October 15, 2022**

# NIMH's Minority Mental Health & Mental Health Disparities Priorities

---

Reduce suicide and suicidal behavior among specific populations

Improve NIMH's support of community engaged research with U3 populations to reduce disparities

Identify biological, behavioral, and social mechanisms of action that contribute to persistence of health disparities

Advance implementation research to improve access and utilization of quality care among U3 populations emphasizing community-based interventions

Foster research on employing collaborative, integrated approaches to reduce disparities in mental health prevalence and care

U3:understudied,underrepresented,underreported

# NIMH Clinical Trials Funding Opportunity Announcements

## Clinical Trial Pipeline - Phase of Intervention Development

First in Human	Exploratory Experimental Therapeutics	Confirmatory Efficacy	Effectiveness (Prevention, Treatment, Services)
First in Human and Early Stage Clinical Trials of Novel Investigational Drugs or Devices for Psychiatric Disorders (U01)*			Pilot Effectiveness Trials for Treatment, Preventive and Services Interventions (R34)
	Early Stage Testing of Pharmacologic or Device-based Interventions for the Treatment of Mental Disorders (R61/R33) and (R33)*	Confirmatory Efficacy Clinical Trials of Non-Pharmacological Interventions for Mental Disorders (R01)	Clinical Trials to Test the Effectiveness of Treatment, Preventive, and Services Interventions (R01)
	Development of Psychosocial Therapeutic and Preventive Interventions for Mental Disorders (R61/R33) and (R33)		Clinical Trials to Test the Effectiveness of Treatment, Preventive, and Services Interventions (Collaborative R01)

# Data Sharing Requirements

---

- All NIMH human subjects studies must specify data-sharing plans
- Generally expected to include depositing study data into the NIMH Data Archive (NDA) periodically during the study
- Notice of Data Sharing Policy for the National Institute of Mental Health ([NOT-MH-19-033](#))
- Recent notice around the collection of Common Data Elements ([NOT-MH-20-067](#))

# Increased Requirements in Grant Applications

---

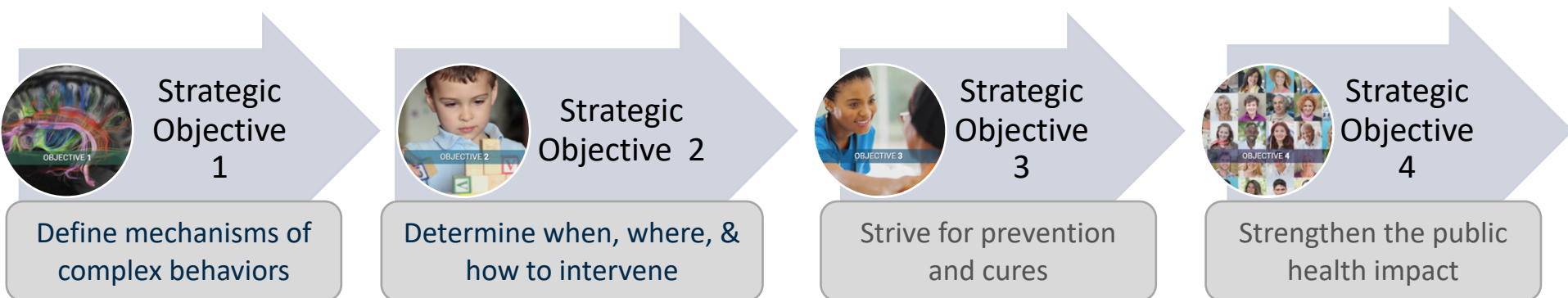
- **Rigor and Transparency:** Must specify how the study will address/enhance research rigor and transparency (NOT-OD-15-103)
- **Sex as a Biological Variable:** Expect to see increasing attention directed toward this
- **Inclusion Across the Lifespan:** New policy requires justifying exclusion of potential study participants by age:  
<https://grants.nih.gov/grants/funding/lifespan/lifespan.htm>

# AGENDA

---

- NIMH Budget for Fiscal 2022
- NIMH Strategic Plan Updates
- Priorities and Initiatives
- **Geriatrics & Aging Processes Branch**
- Future Directions for the Branch
- Open Discussion

# NIMH Structure





# Division of Translational Research (DTR)

---

Director: Sarah Hollingsworth Lisanby, MD

Deputy Director: Mi Hillefors, MD, PhD

- “Adult Programs”
  - Adult Psychopathology & Psychosocial Interventions Branch
  - Adult Pathophysiology & Biological Interventions Development Branch
  - Geriatrics & Aging Processes Research Branch
  - Traumatic Stress Program
- “Developmental Programs”
  - Developmental Mechanisms and Trajectories of Psychopathology Branch
  - Biomarker and Intervention Development for Childhood-Onset Mental Disorders Branch
- Research Training & Career Development Program
- Small Business Research Program

# Geriatrics and Aging Processes Research

## Branch: Areas of Emphasis

---

- Predictors and mechanisms of late-life mental disorders (esp. genetic, neurobiological, physiological, cognitive, psychosocial, and disability)
- Trajectories of chronic mental illnesses across the lifespan; pathways of influence of earlier life trauma
- Novel treatment development and approaches
- Predictors and mechanisms of variability in treatment response (esp. genetic and brain structure/function factors)

# Areas of Special Interest

---

- Refocusing traditional lines of research on all forms of mental disorder according to RDoC constructs; increasing attention to heterogeneity within any grouping
- Mechanisms underlying psychiatric and behavioral disturbances in late-life neurodegenerative disorders
- Long-term consequences of mental disorder (e.g., increased risk of dementia or premature mortality, accelerated biological aging)

# Geriatrics and Aging Processes Research Branch: Programs

---

- Behavioral Science of Mental Disorders and Aging
- Neuroscience of Mental Disorders and Aging
- Psychosocial Intervention and Aging
- Pharmacologic and Somatic Intervention and Aging

<http://www.nimh.nih.gov/about/organization/datr/geriatrics-and-aging-processes-research-branch/index.shtml>

# Behavioral Science of Mental Disorders and Aging

---

- **Approaches:**
  - Basic and translational social and behavioral science
  - Clinical geropsychology
  - Cognitive, affective, and decision sciences
- **Focus:**
  - **Social, behavioral, and cognitive:**
    - **Risk factors** contributing to mid-to-late life vulnerability/resilience to mental illness
    - **Mechanisms** of mid-to-late life mental illness pathophysiology
    - **Phenotypes** of mid-to-late life mental disorders
    - **Processes** that shape trajectories of mental illness across the adult lifespan
- **Areas of emphasis and opportunity:**
  - Social Isolation
  - Suicide
  - Predictive Coding and Reward Processing
  - Emotion Regulation

# Neuroscience of Mental Disorders and Aging Program

---

- Basic and translational neuroscience applications to understand risk factors, presentation, course, and outcome of mid to late-life mental illness
- Understand aging-related neural processes that contribute to vulnerability and resilience to mental illness across the adult lifespan
- Neural mechanisms that contribute to
  - the pathogenesis or worsening of mid to late life mental illnesses
  - treatment response variation in mid to late-life mental illnesses
  - domains of function relevant to mental illnesses in mid to late-life
- Molecular, cellular, and systems level of brain function, state-of-the-art neuroimaging, magneto/electrophysiology, and stimulation methods like ECT and TMS are supported

# Novel Mechanism Research on Neuropsychiatric Symptoms (NPS) in Alzheimer's Dementia

---

- [PAR-20-157](#) (R01) and [PAR-20-159](#) (R21)
- Aim: to encourage applications for studies that will enhance knowledge of mechanisms associated with neuropsychiatric symptoms (NPS) in persons with Alzheimer's disease (AD) or Alzheimer's disease-related dementias (ADRD)
- The findings are expected to advance mechanistic understanding of both biobehavioral and neurobiological pathways leading to NPS. Findings may also provide insight into novel therapeutic targets that can be advanced into interventions to treat and prevent the development of NPS in AD and/or ADRD
- NIA and NIMH sponsored FOA

# Mood and Psychosis Symptoms during the Menopause Transition

---

- PAR-MH-22-035 (R01) and PAR-MH-22-036 (R21)
- Aim: To encourage research that will advance mechanistic and translational research on the onset and worsening of mood and psychotic disorders during the menopausal transition (or perimenopause)
- Research is solicited that will advance understanding of the underlying neurobiological and behavioral mechanisms of mood disruption and psychosis during the menopausal transition and that will identify novel targets for future mental health interventions or prevention efforts



# Geriatric Intervention Research

---

- **Observational and experimental outcome studies:**
  - pharmacologic and somatic interventions
  - behavioral and psychosocial interventions
  - algorithms for combining or sequencing multiple interventions
- **Treatment, prevention, or rehabilitation**
- **Acute, continuation, or maintenance phases**
- **Primary outcomes can include:**
  - relapse prevention
  - enhancement of function or reduction of disability
  - enhancement of treatment access, acceptance, adherence

# Encourage Innovation in Intervention Development

---

- Capitalize on basic science discoveries in formulating new intervention targets
- Foster collaborations between neuroscience and behavioral science in treatment development
- Identify and enhance mechanisms of change
- Develop new preventive as well as treatment interventions
- Support effectiveness as well as efficacy studies
- Produce practical information (findings applicable in current health care context)
- Emphasize research with potential to “change practice”
- Emphasize interventions with high likelihood of broad usage
- Expand range of outcomes assessed (e.g., not only symptoms, but also functioning, quality of life, use of other services, etc.)

# Future Directions for the Branch

---

- The next generation of researchers
- Understanding molecular, cellular, and systems levels of brain function
- Aging biology and its relationship to mental illness
- Translation of science into practice
- Encouraging studies on underrepresented populations
- Implementation strategies
- Innovative partnerships, consortia, etc

# Mailing Lists about NIMH and NIH-related News

---

- NIMH Website updates: [www.nimh.nih.gov](http://www.nimh.nih.gov)
- Inside NIMH (newsletter, 3X per year):  
<http://www.nimh.nih.gov/site-info/listserv.jsp?listServName=INSIDE-NIMH-L>
- NIMH Funding Opportunities:  
<http://www.nimh.nih.gov/site-info/listserv.jsp?listServName=NIMHFUNDINGOPPS>
- NIH Guide to Grants and Contracts:  
<http://grants.nih.gov/grants/guide/index.html>

# Please Contact Program Staff

---



## Contact us early... and often!

We provide assistance prior to submission to ensure your application...

- ✓ Meets referral guidelines and is consistent with NIH/NIMH grant policies
- ✓ Aligns well with the Institute priorities (find the right home for your research)
- ✓ Uses the funding mechanism most appropriate for your research career stage, needs, and training/research goals
- ✓ Meets review criteria (research plan, training plan, mentors, environment)
- ✓ Will optimally set you up for subsequent funding and future success

# NIMH Vision and Mission

---

## VISION



NIMH envisions a world in which mental illnesses are prevented and cured.

## MISSION



To transform the understanding and treatment of mental illnesses through basic and clinical research, paving the way for prevention, recovery, and cure.

# Updates from the National Institute on Aging

**Liz Necka, PhD**

Division on Behavioral and Social Research

National Institute on Aging

**March 15, 2022**

**Succeeding in Mental Health and Aging Research March Webinar**

# Overview

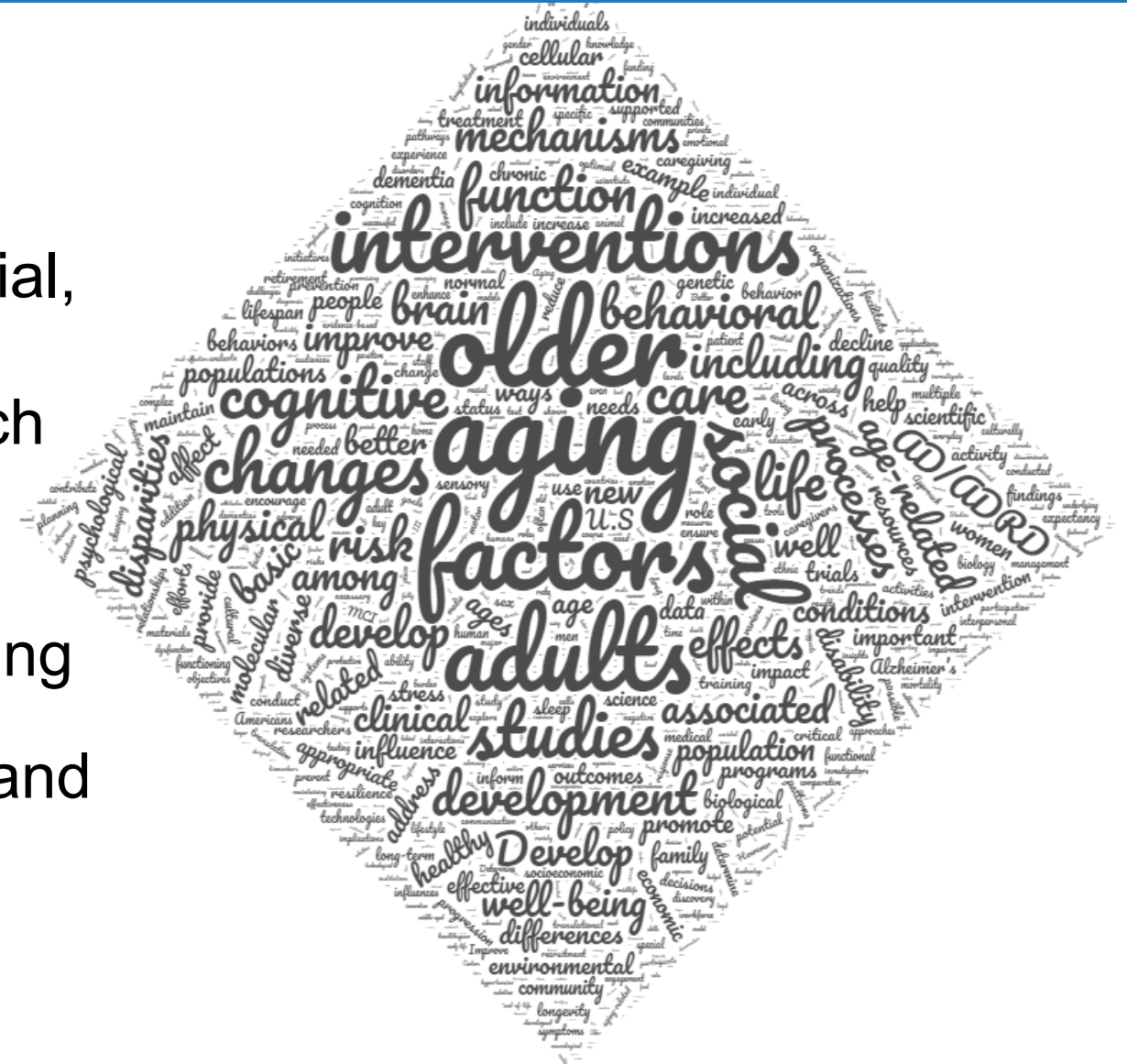
- About NIA
- BSR Priorities
- Finding the Right Funding Opportunity
- Current Funding Opportunities



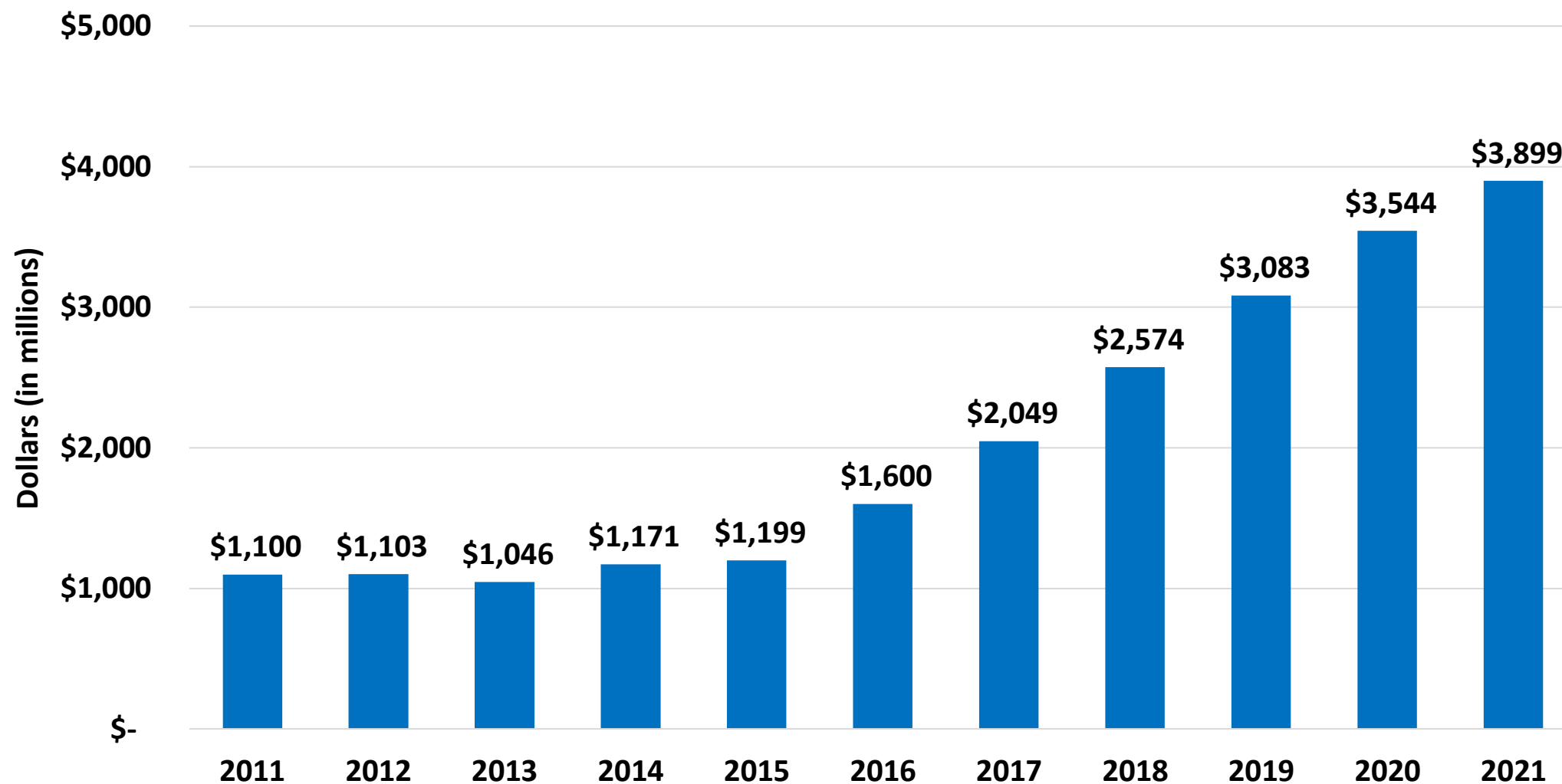
# About NIA

# NIA mission and goals

- Support and conduct genetic, biological, clinical, behavioral, social, and economic research on aging.
- Foster the development of research and clinician scientists in aging.
- Provide research resources.
- Disseminate information about aging and advances in research to the public, health care professionals, and the scientific community, among a variety of audiences.



## NIA Appropriations Fiscal Years 2011-2021



# FY2022 Interim NIA Pay Lines\* are Publicly Available

## CSR-reviewed Research Applications

	General pay line <500k	General pay line ≥\$500k	AD/ADRD pay line
All (except below)	8%	5%	25%
New Investigator R01	11%	8%	28%
Early Stage Investigator R01	13%	10%	30%

## NIA-reviewed Research Applications

	General pay line (non-ADRD)	ADRD pay line
Program Projects	13	37
Other	13	37
Career development	18	28
Fellowship	26	28

# NIA Organization

Division of Aging  
Biology

Division of  
Behavioral and  
Social Research

Division of  
Geriatrics and  
Clinical  
Gerontology

Division of  
Neuroscience

Division of  
Extramural  
Activities

# NIA BSR Priorities

# NIA Division of Behavioral and Social Research – Research Priorities



***Health, function, and well-being***



***Life course approach to studying aging processes and health disparities***



***Midlife prevention of the chronic diseases of aging; reversibility & redirection of adverse aging trajectories***



***Promotes rigorous approaches to understanding and advancing behavior change at the individual and organizational levels***



***Develops new innovative behavioral and social science approaches to addressing Alzheimer's disease and related dementias***

# BSR AD/ADRD Research Priorities

Supporting social, psychological, economic, and behavioral research on the processes of aging and AD/ADRD at the individual and population levels

Cross-cutting themes:

- Understanding and Addressing Health Disparities
- Life Course Perspective on Aging Processes
- Biobehavioral and Biosocial Integration

Alzheimer's-related Research in BSR





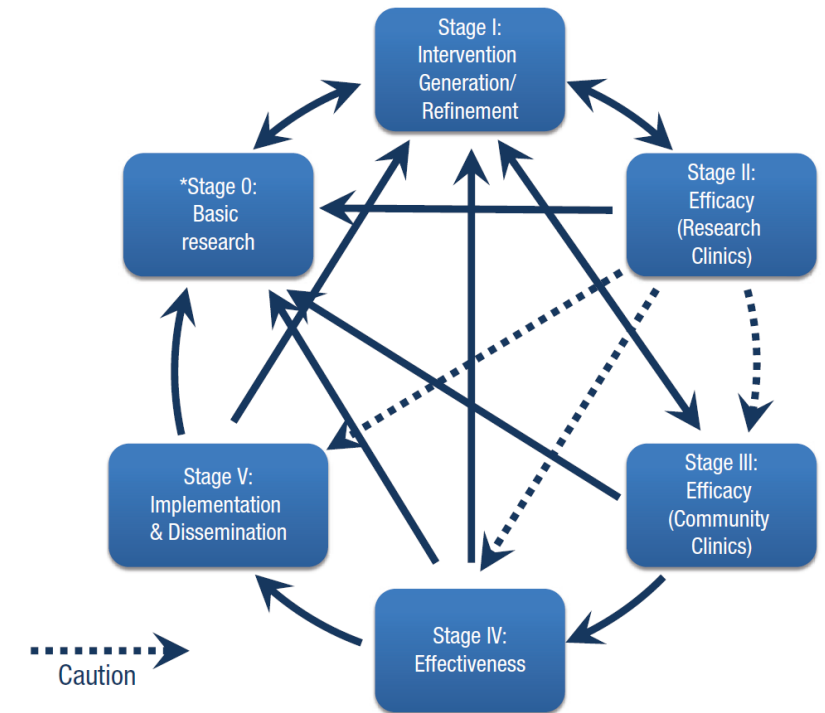
# National Advisory Council on Aging Review 2019 (NACA)

- Improve understanding of health disparities in aging (see NIA Health Disparities Framework; <https://www.nia.nih.gov/research/osp/framework>)
- Increase understanding of how macro-social trends influence aging
- Use a range of approaches to understand behavioral, psychological, social, and geroscience explanations of aging
- Encourage research that examines the lifespan
- Support research on individual and organizational behavior change
- Enhance research on cognitive aging
- Support research to improve care for persons with dementia and caregivers
- Enhance research on technology and aging
- Emphasize multidisciplinary training
- Reduce barriers to access to data for research



# Behavioral Intervention Development: NIH Stage Model

- Behavioral intervention development composed of six stages:
  - Stage 0: Basic Science
  - Stage I: Intervention generation, refinement, modification, and adaptation and pilot testing
  - Stage II: Traditional efficacy testing
  - Stage III: Efficacy testing with real-world providers
  - Stage IV: Effectiveness Research
  - Stage V: Dissemination and Implementation Research
- Examination of **mechanisms of behavior change** at every stage
- Consideration of ease of implementation** as early as possible
- Ultimate goal to **produce highly potent and maximally implementable behavioral interventions**
- Example of adopting the **experimental medicine approach**

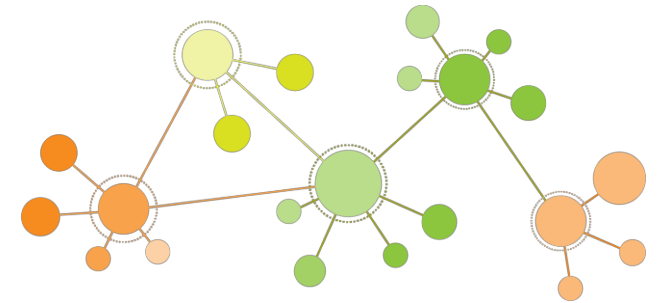


**Fig. 1.** NIH stage model: common and cautionary pathways. Note: Dotted arrow indicates the importance of using caution when considering this pathway.

<https://www.nia.nih.gov/research/dbsr/nih-stage-model-behavioral-intervention-development>

# Data Resources & Research Networks

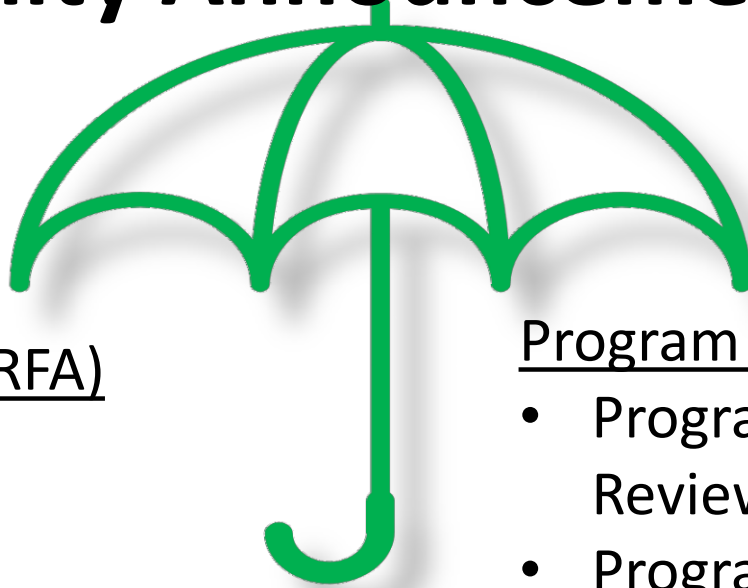
- NIA Research Networks designed to develop new areas, including measure repositories  
<https://www.nia.nih.gov/research/dbsr/behavioral-and-social-research-networks>
  - Stress Measurement Network
  - Reversibility Network
  - Emotional Well Being Network
- Centers and Programs
  - Science of Behavior Change Resource & Coordinating Center
  - Centers on the Demography and Economics of Aging
  - Alzheimer's-related Resource Centers for Minority Aging Research (AD-RCMAR) (and Traditional RCMARs)
  - Edward R. Roybal Centers for Translation Research in the Behavioral and Social Sciences of Aging
  - IMbedded Pragmatic Alzheimer's disease and AD-Related Dementias Clinical Trials (IMPACT) Collaboratory
- Harmonization, coordination, and collaboration across longitudinal studies
  - Population Based: Health and Retirement Study (HRS)



# Finding the right opportunity

Funding opportunities, project priorities, and program officers

# Funding Opportunity Announcements (FOAs)



## Request for Applications (RFA)

- One time solicitation
- Set-aside funds

## Program Announcements (PA)

- Program Announcement w/ Special Review (PAR)
- Program Announcement w/ Set-aside (PAS)

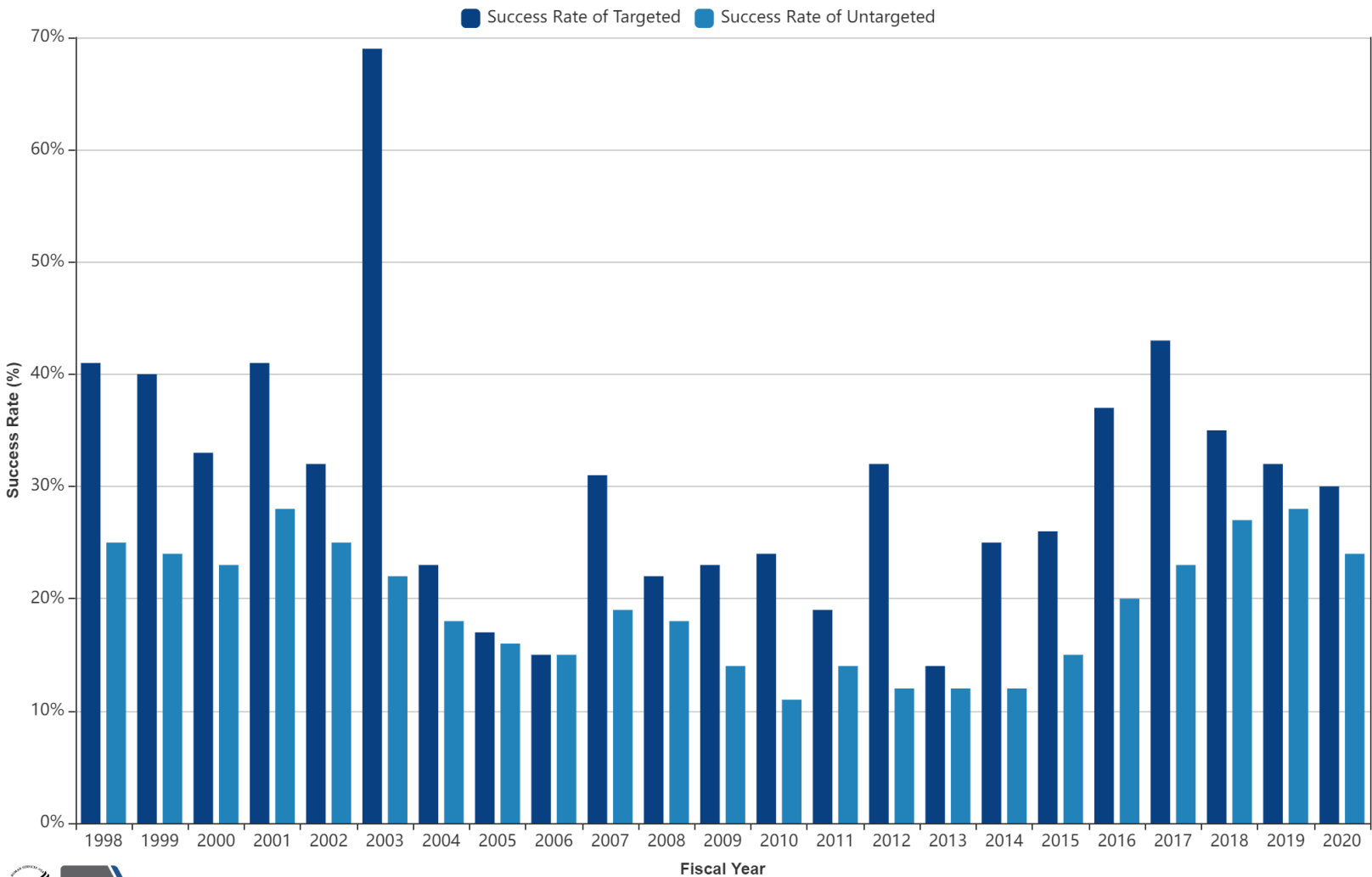
## Notice of Special Interest (NOSI)

- Linked to PAs
- Used to signal research priorities
- Points the applicant to an existing Program Announcement

Success Rates generally higher for RFAs

Research Project Grants: Success Rates of New (Type 1) Competing Applications for Targeted and Untargeted Research by Institute or Center (IC)

NIA



# NIA Concept Approval

- Concepts are approved at the National Advisory Council on Aging (NACA) Meetings
- Approved concepts here to give interested researchers maximal lead time to plan projects.
- Note: not all concepts will necessarily end up converting to a Funding Opportunity Announcement

# BSR Approved Concepts

<https://www.nia.nih.gov/approved-concepts#Jan2022>

- Broadening the Scope and Reach of NIA's Resource Centers for Minority Aging Research (RCMAR) Program
- Measures and Methods for Research on Family Caregivers for People Living with AD/ADRD
- More Mobile Monitoring of Cognitive Change, Continued (M3C3)
- Policy and AD/ADRD Healthcare Disparities: Access, Utilization, and Quality
- Precision Medicine Approaches in Addressing AD/ADRD Minority Health & Disparities
- Understanding the Supply of Professional Dementia Care Providers and Their Decisions

*Please note that not all concepts will necessarily end up converting to a Funding Opportunity Announcement*



# Fitting your project to NIH priorities and program officers

The screenshot shows the NIH RePORTER homepage. At the top, there's a navigation bar with 'NIH RePORTER' and links for 'FAQs', 'API', and 'Sign In'. Below this is a 'Quick Search' section with a search bar and a 'Search' button. A welcome message states: 'Welcome to the new NIH RePORTER. Rebuilt from the ground up, leveraging the latest technologies, to bring you an enhanced experience. Faster performance, mobile ready, and an intuitive, all-new Quick Search brings the power of NIH RePORTER to your fingertips.' There's a 'Feedback' button below this message.

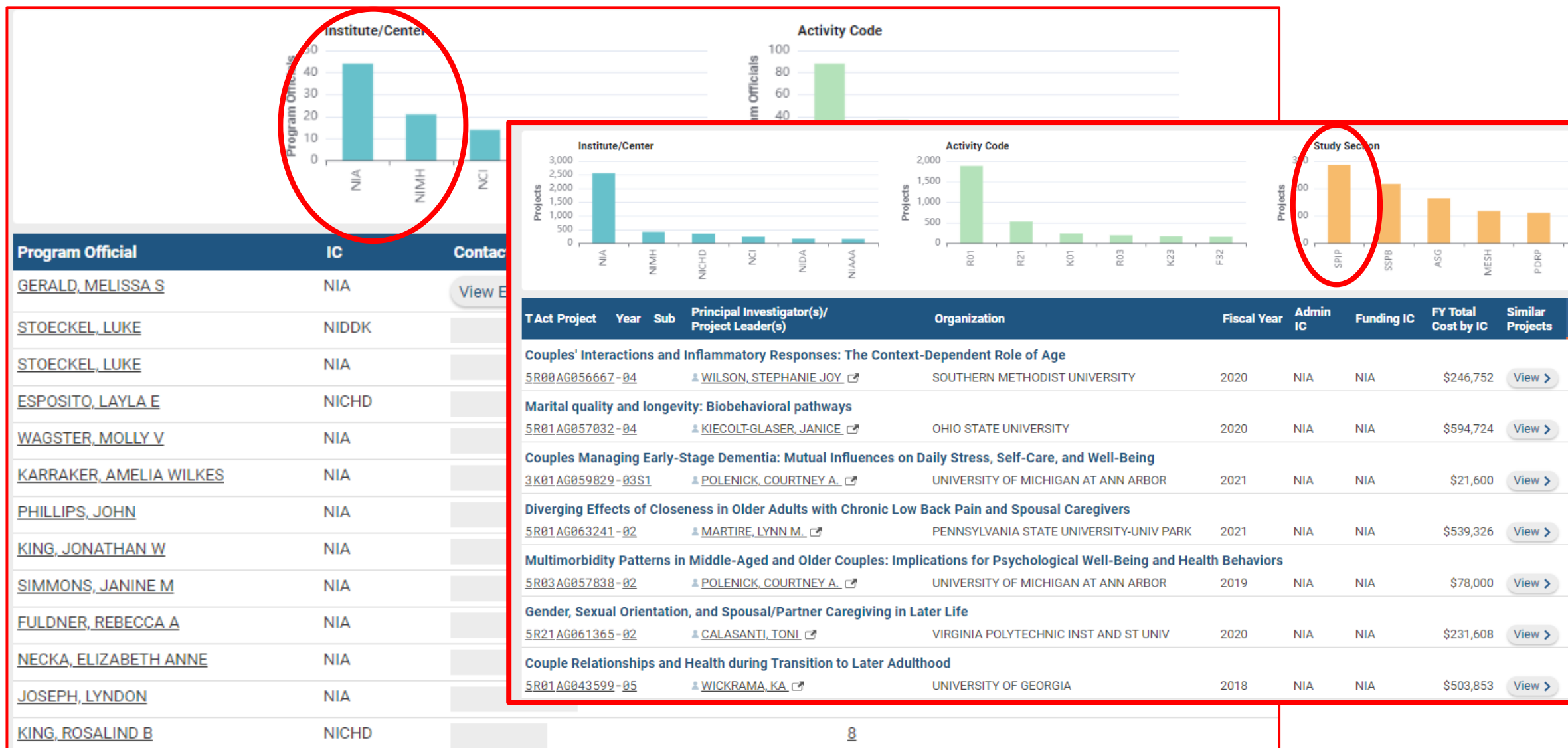
Two charts are displayed: 'Active Funding by State' (a map of the US) and 'Active Projects by Institute/Center' (a bar chart showing the number of active projects for various NIH institutes/centers). The bar chart data is as follows:

Institute/Center	Number of Active Projects
CIT	100
CLC	100
RIC	100
NCATS	100
NCCIH	100
NCI	10,000
NEI	2,000
NIHRR	1,000
NIHBI	7,000
NIA	6,000
NIAAA	1,500
NIAD	9,000
NIAMS	2,000
NIIB	1,500
NICH	4,000
NIDA	3,000
NIHCD	1,500
NIHCR	1,500
NIHDK	5,500
NIHES	1,500
NIHNS	8,000
NIHJH	4,000
NIHID	1,000
NIHDS	5,500
NIHNR	1,000
NLM	1,000
OD	1,000

Below the charts is the 'Advanced Projects Search' section. It includes fields for 'Fiscal Year' (set to 'Active Projects'), 'Principal Investigator (PI)', 'Organization', 'Agency/Institute/Center', and 'Project Number/Application ID'. There are 'Reset' and 'Search' buttons. A 'Matchmaker' button is circled in red. A red arrow points from this button to a detailed 'Matchmaker' modal on the right side of the image.

The 'Matchmaker' modal is titled 'Matchmaker' and contains the text: 'Enter abstracts or other scientific text to find potential Program Officials, ICs, and review panels for your research.' It has a text input area, a 'Reset' button, and a 'Search' button. Below the input area, it says '15,000 characters left'. There are two radio buttons: 'Similar Projects' (selected) and 'Similar Program Officials'.

# Fitting your project to NIH priorities and program officers



# Speaking with your program officer


<https://www.nia.nih.gov/research/blog/2021/05/communicating-with-program-officers>

HEALTH INFORMATION
RESEARCH & FUNDING
NEWS & EVENTS
ABOUT NIA


Home / Research & Funding / Blog / We Don't Bite! Communicating With Your Program Officer

## We don't bite! Communicating with your program officer

May 12, 2021



[Damali MARTIN](#),  
Program Director,  
Division of  
Neuroscience (DN).



[Amelia KARRAKER](#),  
Program Official,  
Division of Behavioral  
and Social Research  
(DBSR).

Applications
Funding Policy
Success Rates

If the thought of contacting a program officer (PO) seems unnerving to you, then you are not alone! Many investigators, especially those in the early stages of their career, are hesitant to contact a PO to seek advice or guidance. However, connecting with you is one of the most important and enjoyable parts of our job. Here are some tips that will help make your interactions with us smooth and productive.

### What do NIA program officers do?

Program officers at NIA (who are sometimes referenced as health science administrators, or HSAs) implement and manage science and public health programs

### Blog Topics


Select Topic
▼


ABOUT THIS BLOG
COMMENT POLICY
NIA FUNDING INFORMATION


# Butler Williams Scholar Program


Applications due April 15, 2022:

<https://www.nia.nih.gov/form/bw-scholars-22>

 U.S. Department of Health & Human Services

 National Institute on Aging

Search 

COVID-19 


Get the latest public health information from CDC » Get the latest research information from NIH | Español » NIH staff guidance on coronavirus (NIH Only) »

HEALTH INFORMATIONRESEARCH & FUNDINGNEWS & EVENTSABOUT NIA

[Home](#) / [Research & Funding](#) / [Blog](#) / Give Your Career The Butler-Williams Boost This Summer!

## Give your career the Butler-Williams boost this summer!

January 19, 2022




[Patricia JONES](#),  
Director,  
Office of Special Populations (OSP).

[Career Development Awards](#)[Diversity](#)[Research](#)[Training](#)

Attention early-stage investigators and junior faculty: Would you like to take both your passion for fighting health disparities and your research career to the next level? If so, it's time to [apply to the 2022 NIA Butler-Williams Scholars Program](#)!

The [Butler-Williams \(B-W\) Scholars Program](#) provides powerful pathways for early-career scientists to expand their networks, advance grant writing skills, and gain a broader understanding of the science NIA conducts and supports. It is especially helpful for researchers aiming for a career development award or their first R01, but anyone interested in aging research is encouraged to apply. Led by the Office of Special Populations, the B-W Scholars Program is a crucial component of NIA's

### Blog Topics

Select Topic 

[ABOUT THIS BLOG](#)[COMMENT POLICY](#)[NIA FUNDING INFORMATION](#)

# Current Funding Opportunities

# BSR AD/ADRD Time-Limited Funding Opportunities

FOA Number	Title	Release Date	Final Due Date
<a href="#"><u>RFA-AG-23-005</u></a>	Health Equity and the Cost of Novel Treatments for Alzheimer’s Disease and Related Dementias (R61/R33 Clinical Trial Not Allowed)	2/17/2022	7/1/2022
<a href="#"><u>RFA-AG-23-003</u></a>	Resources to Promote Coordination and Collaboration across Deeply Phenotyped Longitudinal Behavioral and Social Studies of Aging (U24 Clinical Trial Not Allowed)	12/20/2021	7/1/2022
<a href="#"><u>RFA-AG-23-007</u></a>	Screening for Cognitive Impairment: Decision-Making (U24 Clinical Trial Optional)	2/23/2022	7/11/2022
<a href="#"><u>RFA-MH-22-135 &amp; RFA-MH-22-136</u></a>	Social Disconnection and Suicide Risk in Late Life (R01 Clinical Trial Optional) & (R21 Clinical Trial Optional).	12/23/2021	10/15/2022

# Selected BSR AD/ADRD Funding Opportunities & NOSIs

FOA Number	Title	Expiration Date
<a href="#"><u>PAR-22-093</u></a>	Research on Current Topics in Alzheimer's Disease and Its Related Dementias (R01 Clinical Trial Optional)	11/13/2024
<a href="#"><u>PAR-22-094</u></a>	Research on Current Topics in Alzheimer's Disease and Its Related Dementias (R21 Clinical Trial Optional)	11/13/2024
<a href="#"><u>NOT-AG-21-050</u></a>	Notice of Special Interest (NOSI): Sex and Gender Differences in Alzheimer's Disease and Alzheimer's Disease-Related Dementias (AD/ADRD)	11/13/2024
<a href="#"><u>NOT-AG-21-049</u></a>	Notice of Special Interest (NOSI): Dementia Care Workforce for Those Living with Alzheimer's Disease and Alzheimer's Disease-Related Dementias (AD/ADRD)	11/13/2024
<a href="#"><u>NOT-AG-21-048</u></a>	Notice of Special Interest (NOSI): Digital Technology for Early Detection and Monitoring of Alzheimer's Disease and Related Dementias	11/13/2024
<a href="#"><u>NOT-AG-21-047</u></a>	Notice of Special Interest (NOSI): Behavioral and Social Science Priority Areas in Dementia Care Partner/Caregiver Research	11/13/2024
<a href="#"><u>NOT-AG-21-046</u></a>	Notice of Special Interest (NOSI): Dementia Care Research: Programs and services for persons with dementia	11/13/2024
<a href="#"><u>NOT-AG-21-045</u></a>	Notice of Special Interest (NOSI): Opportunities for Research in Epidemiology of Alzheimer's Disease and Alzheimer's Disease-Related Dementias (AD/ADRD) and Cognitive Resilience	11/13/2024
<a href="#"><u>NOT-AG-21-035</u></a>	Notice of Special Interest: Collaborative Studies on Alzheimer's Disease and Alzheimer's Disease-Related Dementias (AD/ADRD)	11/13/2024
<a href="#"><u>NOT-AG-21-033</u></a>	Notice of Special Interest: Health Disparities and Alzheimer's Disease	11/13/2024

*See our BSR Website for a full list of Funding Opportunities and Applicant Resources*



# Selected BSR Funding Opportunities & NOSIs

FOA Number	Title	Expiration Date
<a href="#"><u>PAR-21-360</u></a>	Pilot Studies for the Spectrum of Alzheimer's Disease/Alzheimer's Disease-Related Dementias and Age-Related Cognitive Decline (R61 Clinical Trial Optional)	1/8/2025
<a href="#"><u>PAR-21-359</u></a>	Early and Late Stage Clinical Trials for the Spectrum of Alzheimer's Disease/Alzheimer's Related Dementias and Age-Related Cognitive Decline (R01 Clinical Trial Optional)	1/8/2025
<a href="#"><u>PAR-21-307</u></a>	Dementia Care and Caregiver Support Intervention Research (R01 Clinical Trial Required)	2/14/2024
<a href="#"><u>PAR-21-308</u></a>	Pragmatic Trials for Dementia Care and Caregiver Support (R61/R33 – Clinical Trial Required)	2/14/2024
<a href="#"><u>PAR-21-349/</u></a> <a href="#"><u>PAR-21-350/</u></a> <a href="#"><u>PAR-21-352</u></a>	Research on Biopsychosocial Factors of Social Connectedness and Isolation on Health, Wellbeing, Illness, and Recovery	6/22/2024
<a href="#"><u>PAR-21-280/</u></a> <a href="#"><u>PAR-21-281</u></a>	Dyadic Interpersonal Processes and Biopsychosocial Outcomes	5/8/2023
<a href="#"><u>NOT-AG-21-012</u></a>	Notice of Special Interest: Integrative Studies of Neural Mechanisms Underlying Fundamental Affective Processes in Aging	1/8/2024
<a href="#"><u>NOT-AG-21-020</u></a>	Notice of Special Interest (NOSI): Maximizing the Scientific Value of Secondary Analyses of Existing Cohorts and Datasets in Order to Address Research Gaps and Foster Additional Opportunities in Aging Research	9/8/2023
<a href="#"><u>NOT-MH-21-330</u></a>	Notice of Special Interest (NOSI): Social, Behavioral, and Economic Impact of COVID-19 in Underserved and Vulnerable Populations	9/8/2024



# Workforce Diversity

The **NIH UNITE** initiative has been established to identify and address structural racism within the NIH-supported and the greater scientific community. **Committee E** is focused on the extramural research ecosystem--changing policy, culture and structure to promote workforce diversity.

FOA Number	Title	Expiration Date
PAR-20-317	NIA MSTEM: Advancing Diversity in Aging Research through Undergraduate Education (R25)	5/26/2023
<u>NOT-OD-22-057</u>	Notice of Special Interest (NOSI): Administrative Supplements to Recognize Excellence in Diversity, Equity, Inclusion, and Accessibility (DEIA) Mentorship	4/8/2022
<u>RFA-RM-22-008</u>	NIH Faculty Institutional Recruitment for Sustainable Transformation (FIRST) Program: FIRST Cohort (U54 Clinical Trial Optional)	7/13/2022
RFA-RM-22-001	Limited Competition: Transformative Research to Address Health Disparities and Advance Health Equity at Minority Serving Institutions (U01 Clinical Trial Optional)	5/24/2022
PA-21-071	Research Supplements to Promote Diversity in Health-Related Research (Admin Supp - Clinical Trial Not Allowed)	5/8/2023

<https://www.nia.nih.gov/research/diversity-supplements>



## Connect with NIA/BSR

- Contact a Program Officer: [BSR Staff Listing](#)
- Check out our [Workshop Reports](#)
- Review active [Funding Opportunity Announcements](#)
- Explore our [Networks](#) and [Centers Programs](#)
- Learn about [BSR's AD/ADRD Areas of Emphasis](#)
- Explore our [Data Resources](#)
- Follow us [@ NIA BSR on Twitter](#)
- BSR E-Newsletter: Updates on FOAs, webinars, and opportunities to engage with NIA and the research community [niabsrcomms@mail.nih.gov](mailto:niabsrcomms@mail.nih.gov)



NIA BSR Website

# Subscribe to NIA's Blog to get new FOAs in your inbox

Home / Research & Funding

Inside  
**NIA** A Blog for  
Researchers

Get weekly updates on NIA funding policies and research priorities.



Subscribe

<https://www.nia.nih.gov/research/blog>

# Stay Informed and Connected!

Sign up

<https://nia.nih.gov/sign-up>



[@Alzheimers\\_NIH](#)



[National Institute on Aging – NIH](#)



[National Institute on Aging](#)

[NIH Guide for  
Grants and  
Contracts](#)

<https://grants.nih.gov/grants/guide/listserv.htm>

Thank you!